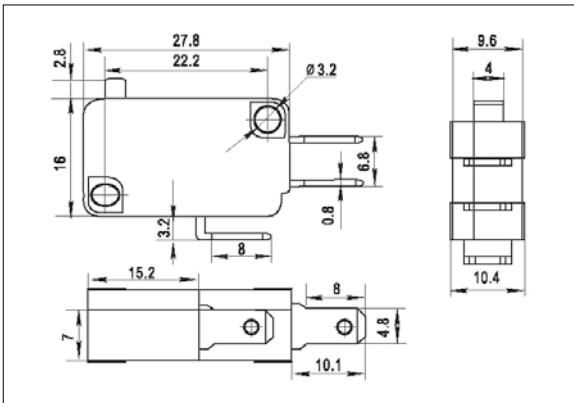




RL-61-F-RE-P6-N-0-21(8)A



RL

21(8)A 250V T85 1E4
16(4)A 250V T125 1E4
16(4)A 250V T85 25E3
16A 125V/250VAC T105

(G) Rating:
6(4)A 250V T125 5E4
6A 125V/250VAC T105
6A 125VAC 1E4

Mechanical life: 1E6 cycles
In-house test



Please check with our sales department the gold contacts possibilities we produce.

RL-61

RL-61	D	BK/BK	P8	O	K			
Function	Cap colour / Housing		Terminals	Lever Type		Operating Force		
D (ON)-OFF 2P	WT	White	 (P4)	0 Not Applicable	14		K	60 ± 15 gf
E ON-(OFF) 2P	BK	Black		1	15		L	100 ± 20 gf
F (ON)-ON 3P	GE	Grey		2	16		M	150 ± 30 gf
 (P20)	 (P14)	 (P12)	3	17	N	250 ± 40 gf		
			 (P6)	4	18	X	300 ± 50 gf	
 [PCB(2-F)]	 [PCB(2)]	 (PCB)	5	19	Y	400 ± 50 gf		
			 (P8)	6	20	Z	500 ± 50 gf NEW	
			7	21				
			8	22				
			9	23				
			10					
			11					
			12					
			13					