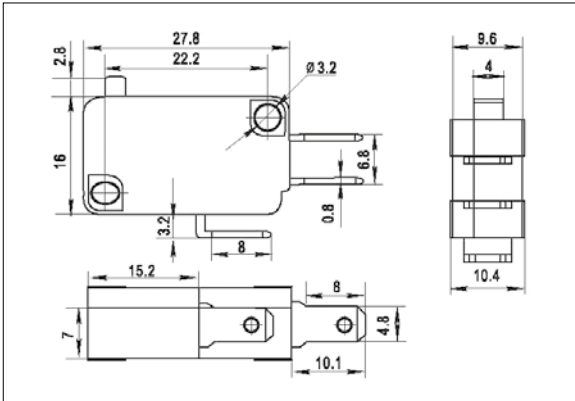
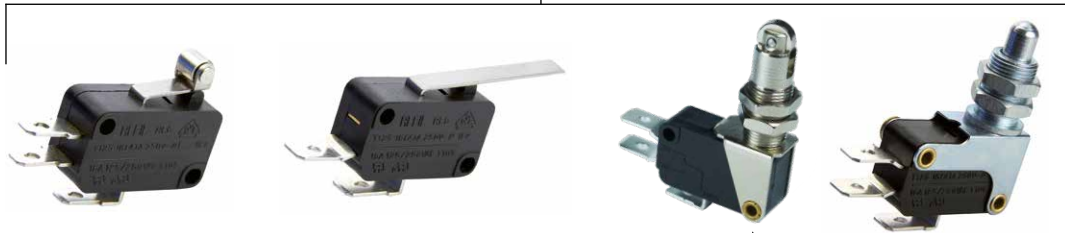




RL-61-F-RE-P6-0-N-21(8)A



RL RL

21(8)A 250V T85 1E4  
16(4)A 250V T125 1E4  
16(4)A 250V T85 25E3  
16A 125V/250VAC T105

(G) Rating:  
6(4)A 250V T125 5E4  
6A 125V/250VAC T105  
6A 125VAC 1E4

Mechanical life: 1E6 cycles  
In-house test



Please check with our sales department  
the gold contacts possibilities we produce.



# RL-61

RL-61	D	BK/BK	P8	O	K			
Function	Cap colour / Housing		Terminals	Lever Type		Operating Force		
D (ON)-OFF 2P	WT	White		0 Not Applicable	14		K	60 ± 15 gf
E ON-(OFF) 2P	BK	Black		1	15		L	100 ± 20 gf
F (ON)-ON 3P	GE	Grey		2	16		M	150 ± 30 gf
			3	17	N	250 ± 40 gf		
				18	X	300 ± 50 gf		
			4	19	Y	400 ± 50 gf		
				20	Z	500 ± 50 gf <b>NEW</b>		
			5	21				
			6	22				
			7	23				
			8	24				
			9	25				
			10	26				
			11	27				
			12	28				
			13	29				